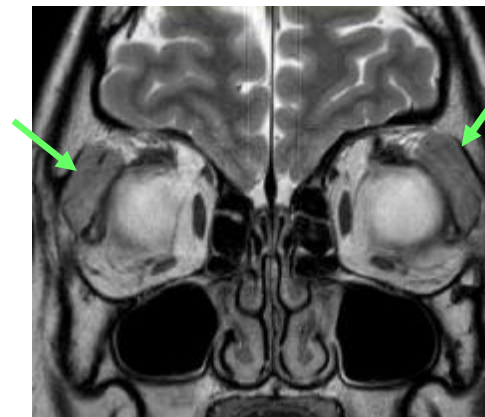
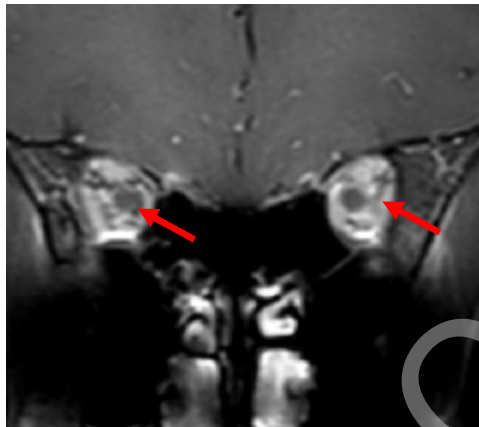
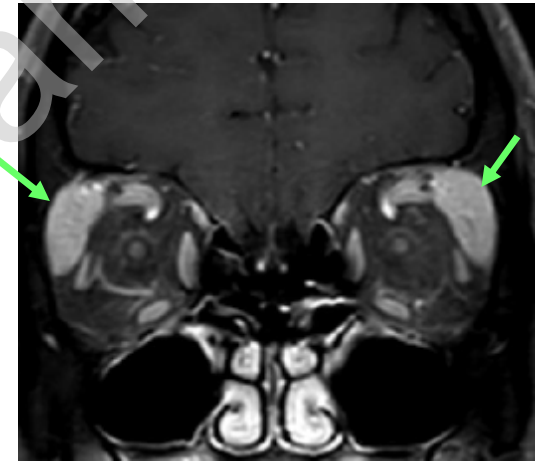


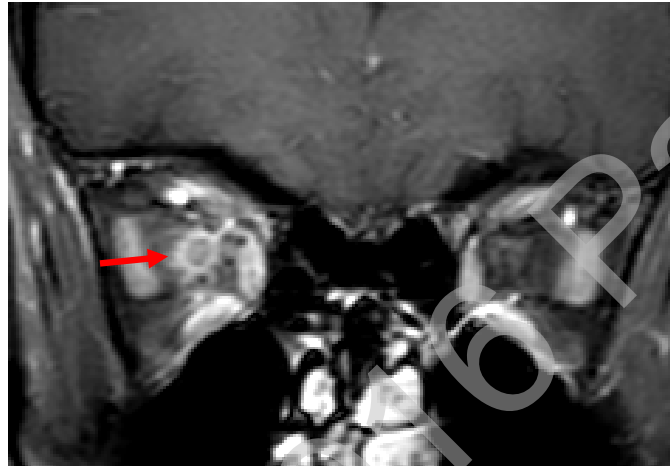
## Differentiating features of central nervous system (CNS) sarcoidosis from multiple sclerosis (MS)

	CNS sarcoidosis	MS
<b>Clinical manifestations</b>		
Relapsing/remitting course	Common	Very common
Diverse neurological findings	Common	Very common
Extraneural involvement	Highly suggestive	Possible (esp. rheumatologic)
Visual apparatus	Anterior segment > Optic nerve	Optic nerve > Anterior segment
Cranial neuropathy	Highly suggestive	Possible, but not common
<b>MR findings</b>		
Leptomeningeal enhancement	Highly suggestive	Rare
Dural enhancement	Highly suggestive	Rare
Enhancing mass adjacent to meninges	Highly suggestive	Rare
Enhancement of parenchymal lesions	Persistent (more than a few weeks)	Transient (within a few weeks)
Hydrocephalus	Highly suggestive	Rare
Involvement of hypothalamus/pituitary	Highly suggestive	Rare
Non-enhancing periventricular WM lesions	Common	Common
Spinal cord	Intradural extramedullary > Intramedullary	Intramedullary
<b>CSF findings</b>		
Lymphocytosis, Elevated protein level	Common	Common
Hypoglycorrhachia	Suggestive	Rare
Elevated ACE level	Suggestive	Possible
Oligoclonal bands	Possible	Highly suggestive

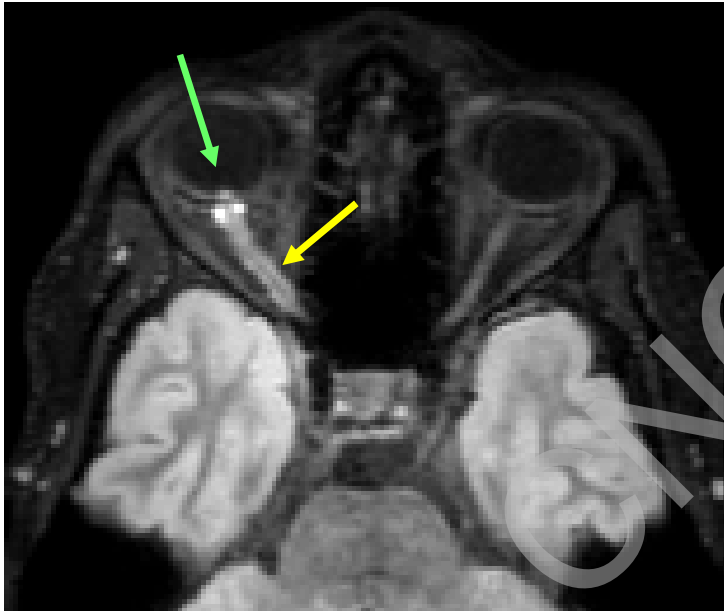
*Nozaki, 2012*

Névrite optique gauche è avec périnévrite apicale è et hypertrophie des glandes lacrymales è



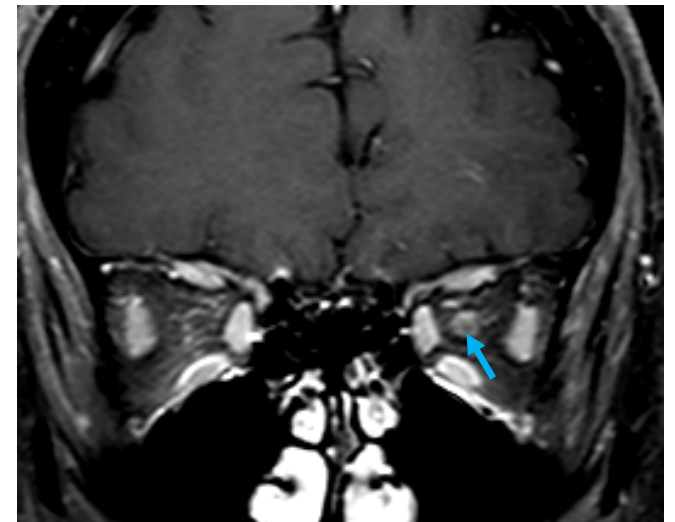
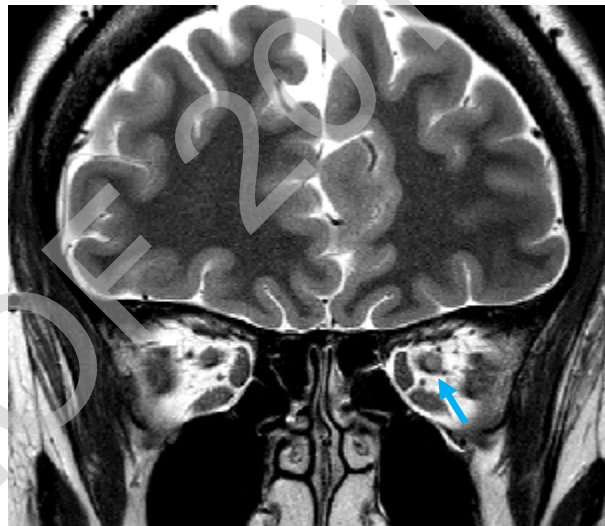
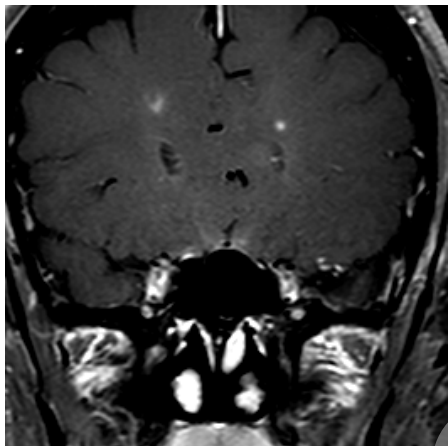
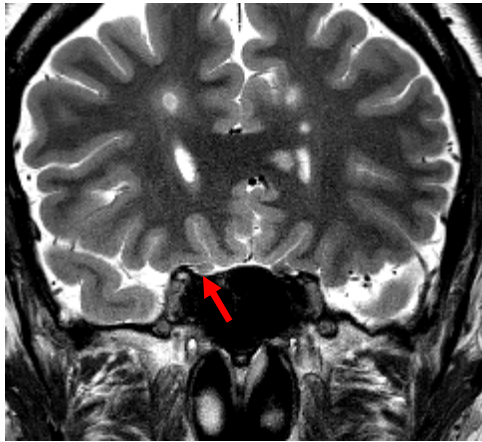


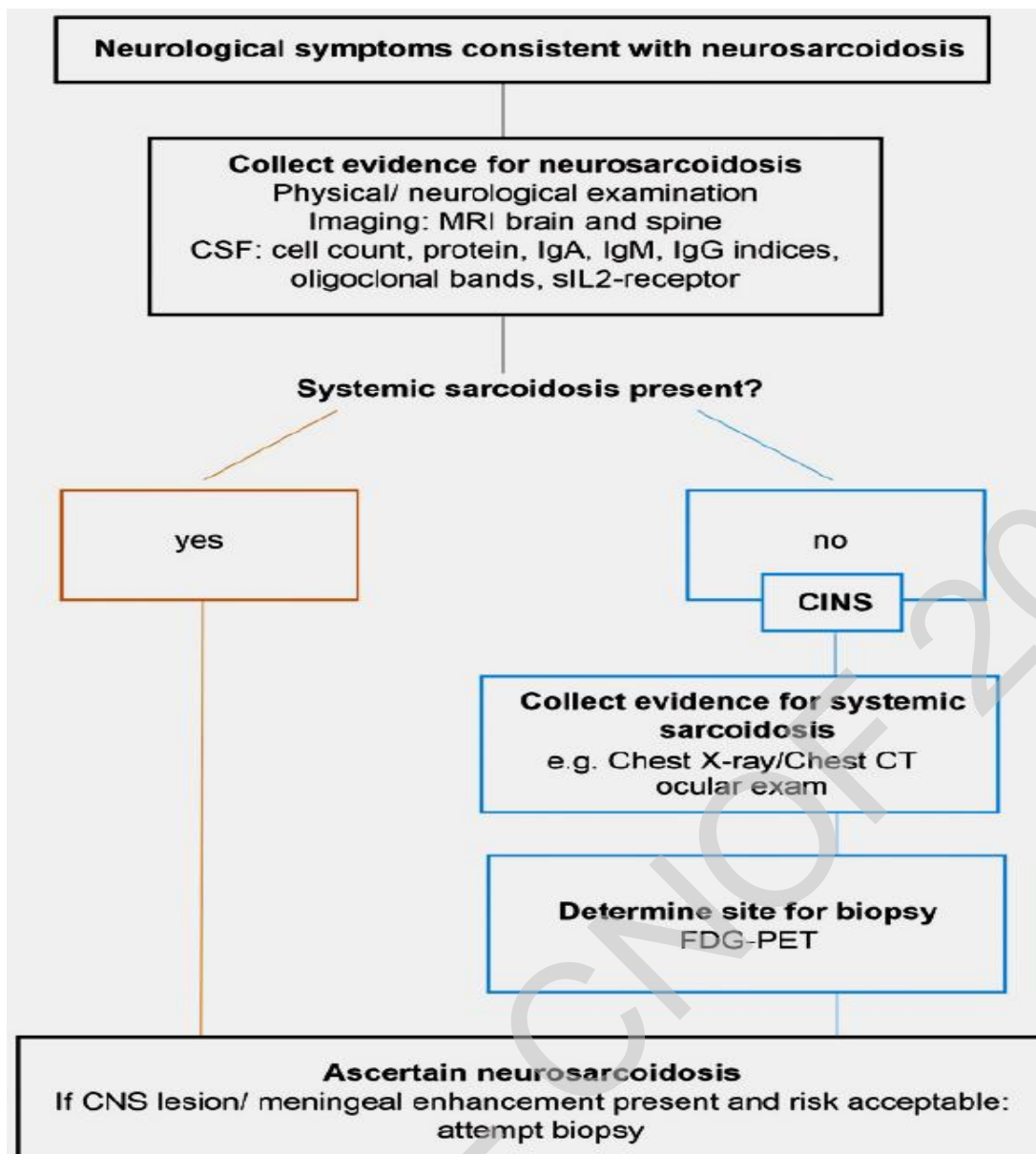
BBS  
névrite è  
et périnévrite è  
Inflammation du LCS bien visible en  
FLAIR è  
avec oedeme papillaire è



Sequelle nevrite droite (HS T2, pas de PC) è  
Nevrite gauche aigue (HS T2, PC) è

SEP active





### Biologie

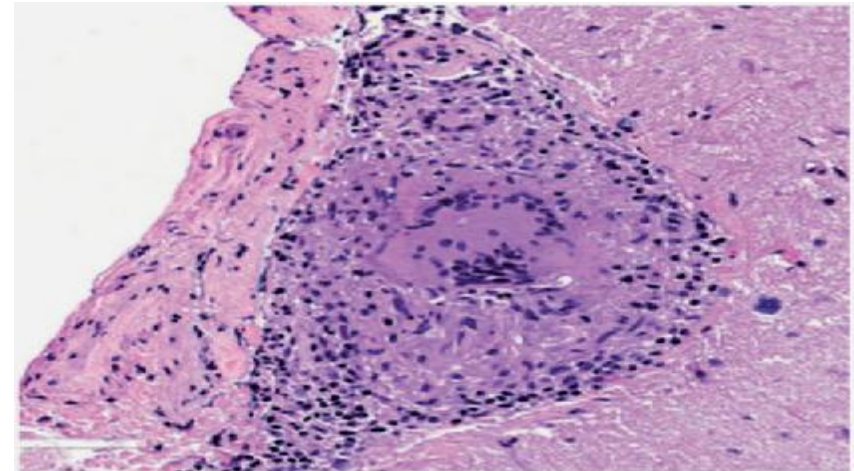
- Dg différentiel
- ECA sg 23,5% [Zajicek, 1999]
- ECA LCS sens 24-55% [Khouri, 2009]

### Imagerie

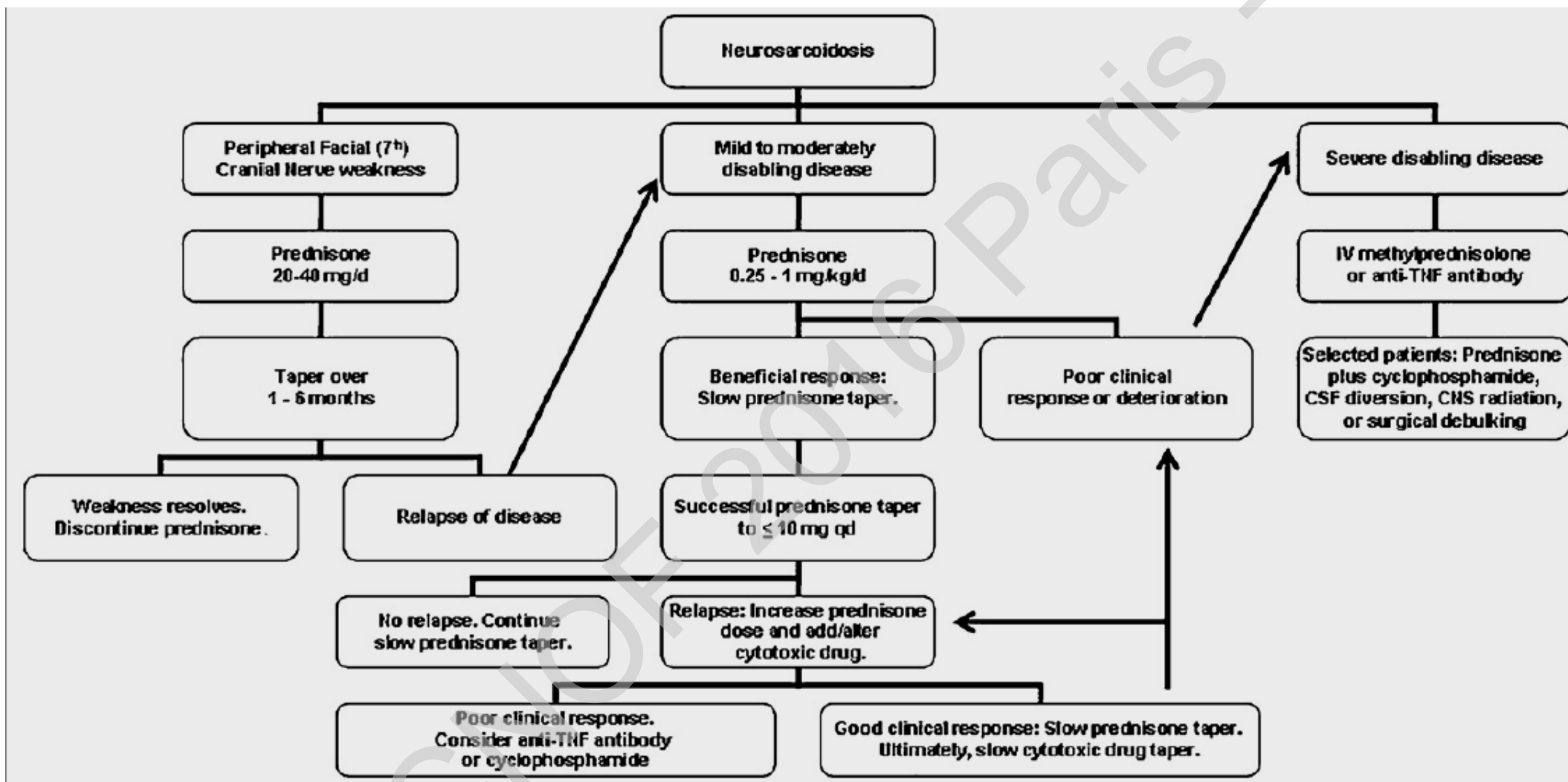
- FDG-Pet-Scan > TAP [Spagnolo, 2014]

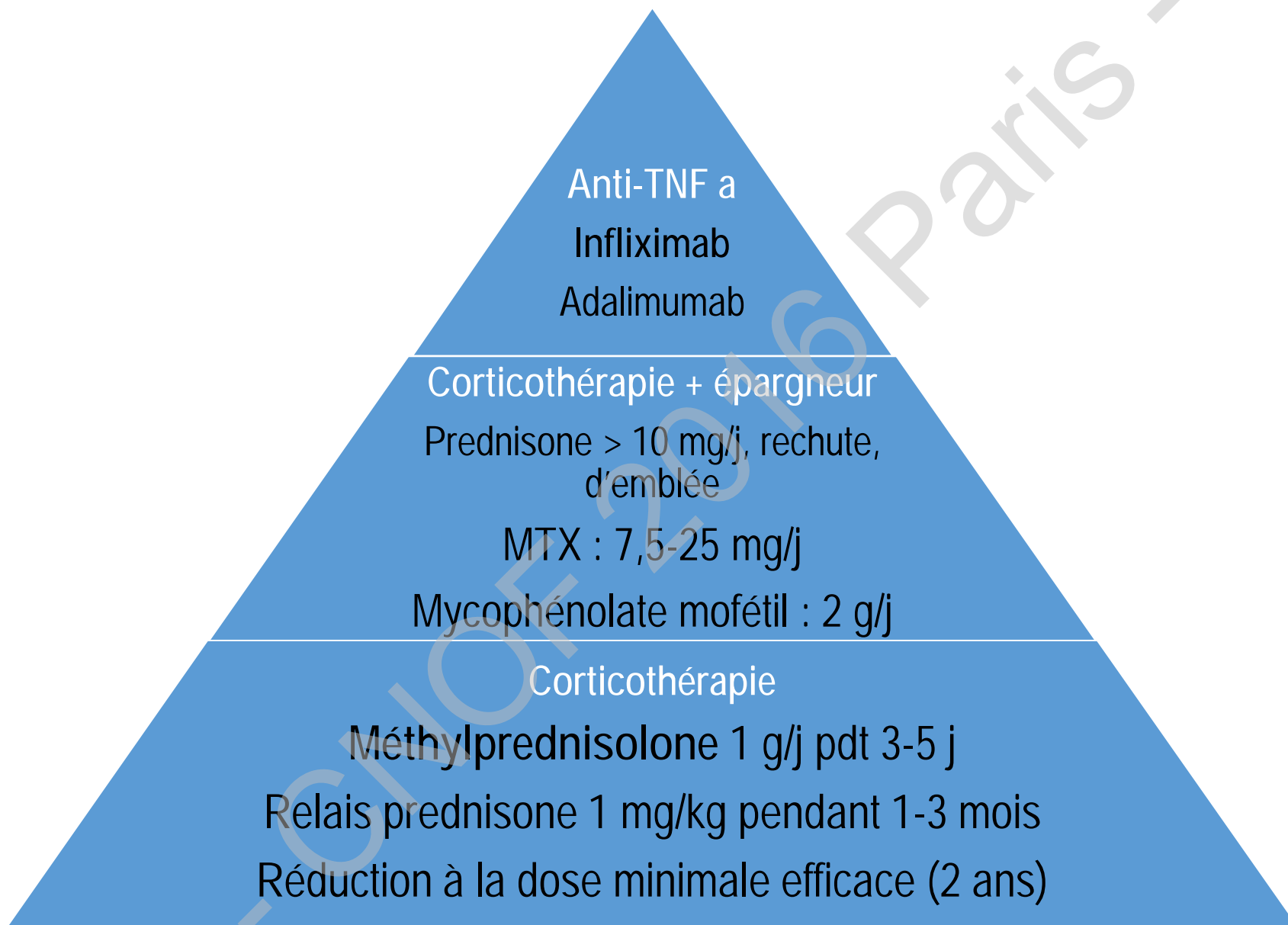
### Histologie

- BGSA sens 18,5% [Blaise, 2011; Bernard, 2012]  
(oui si ACE +/- Rx +)
- Dirigée par le Pet-scan
- Glande lacrymale
- Méningée



*Wegener, 2015*





*Tana, 2015*